

QUICK REFERENCE GUIDE

WELCOME TO DISH NETWORK



FAST TIPS FOR:

- ▶ Operating your satellite receiver
- ▶ Finding your favorite programs
- ▶ Watching programs on separate TVs
- ▶ Answers to common questions

DISH 322



Features of Your Remote Control

To use the features described in this section, make sure you are in **SAT mode** by pressing the **SAT Mode button**

Note: To control a TV, VCR, or other available component, the remote must be programmed. See the User's Guide for details.

SAT Mode

In this mode, you can control your satellite receiver, TV power, volume and mute

TV Mode

In this mode, you can control your TV

VCR Mode

In this mode, you can control your VCR

AUX Mode

In this mode, you can control other programmed components such as a DVD player

Receiver & TV Power ON/OFF

Left button turns the receiver on/off,
Right button turns the TV on/off

Receiver Menu

Access features and settings in your satellite receiver

Themes Button

Search for programs using Themes

Recall Button

Go back to last channel viewed

DISH Button

Explore dish home Interactive TV features

Number Buttons

Enter a desired channel number, or navigate through menus

DISH Network Program Guide

Displays an on-screen guide of current and up to 2 days of future program listings with information

Arrows/Select Buttons

Channel up/down, navigate through menus/guides and select a desired option

Browse Button

See what is on other channels while watching TV

View Satellite Program

Exit out of any menu/guide and go back to watching a program

Search Button

Search for a program

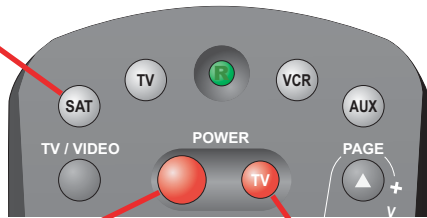


Remote Identifier

Green number 1 indicates TV1
Blue number 2 indicates TV2

Watching Your Satellite Programs

To use your satellite receiver you must be in **SAT** mode by pressing the **SAT Mode** button



Turns the satellite receiver On or Off

Turns the TV On or Off

How to watch TV on TV1

TV1 location is identified with a green 1 on your remote and the green TV1 logo on the TV screen.



My green remote TV1 location is:

- | | | |
|--------------------------------------|---|--------------------------------------|
| <input type="checkbox"/> Family Room | <input type="checkbox"/> Basement | <input type="checkbox"/> Bedroom 1 |
| <input type="checkbox"/> Living Room | <input type="checkbox"/> Kitchen | <input type="checkbox"/> Bedroom 2 |
| <input type="checkbox"/> Den/Office | <input type="checkbox"/> Master Bedroom | <input type="checkbox"/> Other _____ |

To watch satellite TV:

Set TV to _____
(Channel/Input)

Set VCR to _____
(Channel/Input)

How to watch TV on TV2

TV2 locations are identified with a blue 2 on your remote and the blue TV2 logo on the TV screen.



My blue remote TV2 locations are:

- | | | |
|--------------------------------------|---|--------------------------------------|
| <input type="checkbox"/> Family Room | <input type="checkbox"/> Basement | <input type="checkbox"/> Bedroom 1 |
| <input type="checkbox"/> Living Room | <input type="checkbox"/> Kitchen | <input type="checkbox"/> Bedroom 2 |
| <input type="checkbox"/> Den/Office | <input type="checkbox"/> Master Bedroom | <input type="checkbox"/> Other _____ |

To watch satellite TV:

Set TV to _____
(Channel/Input)

Set VCR to _____
(Channel/Input)

VCR must be _____
(On/Off)

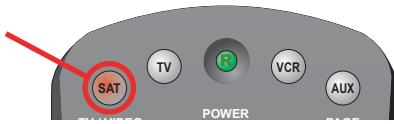


- The Installer will check this box if the Recover button for the TV2 remote control has been programmed and is ready to use.

Note: If this button has not been programmed, see the User's Guide for instructions. For use of the Recover Button, see "Using the Recover Button" in this guide.

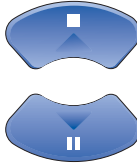
Finding Programs On Satellite TV

Make sure your remote is in SAT mode by pressing the **SAT Mode** button



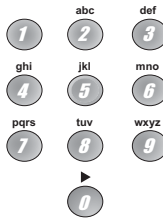
Three easy ways to find the program you want to watch

1. Use the **ARROW UP/DOWN** buttons to change the channel Up or Down one channel at a time



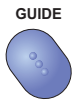
OR

2. Use the Number buttons to enter desired channel number

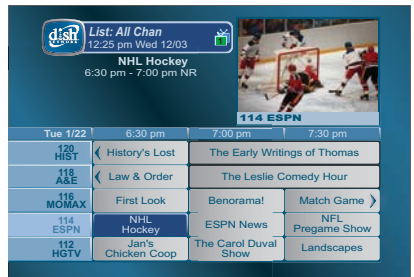


OR

3. Use the **GUIDE** button to display the Program Guide

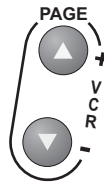
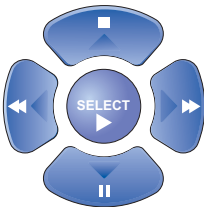


The Program Guide allows you to see current and future program listings.



Then...

Use the **ARROW** or **PAGE UP/DOWN** buttons to highlight a desired program and press the **SELECT** button



Note: If you select a program that is not currently broadcasting, you will have the option to set up a timer.

Pressing the **GUIDE** button repeatedly will cycle through your **Favorites Lists** (see *User's Guide*).

TIP: To skip ahead a specific amount of hours in the guide, enter the desired number of hours with the number buttons, then immediately press the **RIGHT ARROW** button. For example, pressing the 3 button then the **RIGHT ARROW** will go ahead 3 hours in the guide.



Channels

How your channels are organized in the Program Guide:

- | | | | |
|---------|--|--------------|--|
| 100-199 | Entertainment (general info, kids, music, some sports like ESPN) | 580-899 | International & DISH Latino |
| 200-299 | News and Shopping | 900s & 6000s | Music (audio only) |
| 300-399 | Premium Movies | 7000-9399 | Local Broadcasts (most locals can also be found between channels 1-99) |
| 400-499 | Sports Events and Other Programs | 9400s | Public Interest |
| 500-572 | Pay-Per-View and Sport Packages | | |

Learning More About Your Service



dish home



Press the DISH Home button on your remote

- Customer Service
- News & Weather
- Games & Learning
- Entertainment
- Sports
- Pay-Per-View

www.dishnetwork.com



Tune to Channel 101



Using the Recover Button

Use the Recover button to get back to watching satellite programming if you accidentally change channels or inputs on your TV

1



Press and hold the Recover button until all mode buttons light up.

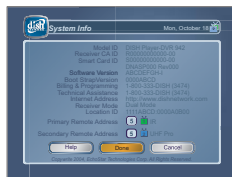
2



Press the Recover button again and wait for the mode buttons to stop flashing.



3



If you see this System Information screen, proceed to step 4. Otherwise, continue pressing the Recover button slowly until it is displayed.

4



Press the Select button (to choose Done).

Frequently Asked Questions



Why do I see a moving DISH Network logo on my TV screen?

Your receiver went into a standby mode or has been turned off. Press the SELECT button on your remote control to bring back programming.

Why do I have a snowy picture (or a blue or black screen) on TV2?

Check to make sure your TV (and if connected, your VCR) is tuned to the correct channel. Refer to the "Watching Your Satellite Programs" section in this guide for correct channel setup or use the Recover button.



Why do some of the channels in the Program Guide have a red background?

These channels are not available in your current subscription. If you would like these channels, visit www.dishnetwork.com.



Why don't some of my channels show up when I bring up the Program Guide or when I browse?

You may have a Favorites List active that does not include those channels. Repeatedly press the Guide button and toggle through the Favorites Lists until you find a list that contains those channels. Also check to see if some channels are locked (see *User's Guide*).



Why doesn't my remote control work?

- Try pressing the SAT Mode button.
- Check to make sure you are using the correct remote (TV1 or TV2) for the desired location.
- Your remote control batteries may need to be replaced.
- Check the remote address (see *User's Guide*).



Why does my receiver change channels and do things on its own?

You may have a neighbor that also has a UHF remote and their remote may be controlling your receiver. This is easily corrected by changing your remote control address. See your *User's Guide* for details on how to do this.



Why does the Program Guide display programs as "Info Not Available"?

Your receiver needs to take a download each night to get the most current program information. Press the Power button on both remotes to turn the receiver off and wait about 20 minutes for the download to occur.



Why does my satellite signal change from good to bad?

Check to see if there are any obstructions in front of your satellite dish. Sometimes new tree or plant growth can obstruct the signal between the satellite and the dish. If you are experiencing frequent signal interruptions, please contact DISH Network.



PHONE

Why does my satellite receiver have to be connected to a telephone line?

Keeping your phone line connected enables you to take advantage of interactive TV services, Customer Support Application, or Caller ID applications. It will also allow you to use your remote control to order Pay-Per-View events or movies. And, you will not be charged the \$4.99 Additional Outlet/Programming Access Fee.



How can I find out how much my bill will be?

- Press the MENU button on your remote control and select Customer Support.
- Press the DISH Home button on your remote and select Customer Service.
- Go to www.dishnetwork.com and select the "My Account" option.
- To learn more about your bill, tune to Channel 101 for information.

For further details on how to maximize enjoyment of your new DISH Network satellite receiver, see the *User's Guide*.

To learn more about the great benefits of DISH Network, tune to DISH Network FYI Channel 101 or visit www.dishnetwork.com.